

г Москва, Лужнецкий проезд,  
д 1Б

A diagram showing a square with side length  $m$ . The area of the square is labeled as  $m^2$ .



The image displays two architectural floor plans of a building, likely for a school or institutional use, showing room layouts, dimensions, and area calculations.

**Left Floor Plan:**

- Rooms and Dimensions:**
  - Room 1: 28.4 (red)
  - Room 2: 49.3 (red)
  - Room 3: 1.70 (red)
  - Room 4: 1.27 (red)
  - Room 5: 1.54 (red)
  - Room 6: 3.86 (red)
  - Room 7: 4.72 (red)
  - Room 8: 1.19 (red)
  - Room 9: 1.27 (red)
  - Room 10: 5.80 (red)
  - Room 11: 2.23 (red)
  - Room 12: 2.12 (red)
  - Room 13: 3.05 (red)
  - Room 14: 8.28 (red)
  - Room 15: 8.09 (red)
  - Room 16: 1.97 (red)
  - Room 17: 1.92 (red)
  - Room 18: 5.26 (red)
  - Room 19: 1.42 (red)
  - Room 20: 2.31 (red)
  - Room 21: 9.51 (red)
  - Room 22: 2.23 (red)
  - Room 23: 1.97 (red)
  - Room 24: 1.70 (red)
  - Room 25: 2.04 (red)
  - Room 26: 1.70 (red)
  - Room 27: 2.04 (red)
  - Room 28: 1.70 (red)
  - Room 29: 2.04 (red)
  - Room 30: 1.70 (red)
  - Room 31: 2.04 (red)
  - Room 32: 1.70 (red)
  - Room 33: 2.04 (red)
  - Room 34: 1.70 (red)
  - Room 35: 2.04 (red)
  - Room 36: 1.70 (red)
  - Room 37: 2.04 (red)
  - Room 38: 1.70 (red)
  - Room 39: 2.04 (red)
  - Room 40: 1.70 (red)
  - Room 41: 2.04 (red)
  - Room 42: 1.70 (red)
  - Room 43: 2.04 (red)
  - Room 44: 1.70 (red)
  - Room 45: 2.04 (red)
  - Room 46: 1.70 (red)
  - Room 47: 2.04 (red)
  - Room 48: 1.70 (red)
  - Room 49: 2.04 (red)
  - Room 50: 1.70 (red)
  - Room 51: 2.04 (red)
  - Room 52: 1.70 (red)
  - Room 53: 2.04 (red)
  - Room 54: 1.70 (red)
  - Room 55: 2.04 (red)
  - Room 56: 1.70 (red)
  - Room 57: 2.04 (red)
  - Room 58: 1.70 (red)
  - Room 59: 2.04 (red)
  - Room 60: 1.70 (red)
  - Room 61: 2.04 (red)
  - Room 62: 1.70 (red)
  - Room 63: 2.04 (red)
  - Room 64: 1.70 (red)
  - Room 65: 2.04 (red)
  - Room 66: 1.70 (red)
  - Room 67: 2.04 (red)
  - Room 68: 1.70 (red)
  - Room 69: 2.04 (red)
  - Room 70: 1.70 (red)
  - Room 71: 2.04 (red)
  - Room 72: 1.70 (red)
  - Room 73: 2.04 (red)
  - Room 74: 1.70 (red)
  - Room 75: 2.04 (red)
  - Room 76: 1.70 (red)
  - Room 77: 2.04 (red)
  - Room 78: 1.70 (red)
  - Room 79: 2.04 (red)
  - Room 80: 1.70 (red)
  - Room 81: 2.04 (red)
  - Room 82: 1.70 (red)
  - Room 83: 2.04 (red)
  - Room 84: 1.70 (red)
  - Room 85: 2.04 (red)
  - Room 86: 1.70 (red)
  - Room 87: 2.04 (red)
  - Room 88: 1.70 (red)
  - Room 89: 2.04 (red)
  - Room 90: 1.70 (red)
  - Room 91: 2.04 (red)
  - Room 92: 1.70 (red)
  - Room 93: 2.04 (red)
  - Room 94: 1.70 (red)
  - Room 95: 2.04 (red)
  - Room 96: 1.70 (red)
  - Room 97: 2.04 (red)
  - Room 98: 1.70 (red)
  - Room 99: 2.04 (red)
  - Room 100: 1.70 (red)
  - Room 101: 2.04 (red)
  - Room 102: 1.70 (red)
  - Room 103: 2.04 (red)
  - Room 104: 1.70 (red)
  - Room 105: 2.04 (red)
  - Room 106: 1.70 (red)
  - Room 107: 2.04 (red)
  - Room 108: 1.70 (red)
  - Room 109: 2.04 (red)
  - Room 110: 1.70 (red)
  - Room 111: 2.04 (red)
  - Room 112: 1.70 (red)
  - Room 113: 2.04 (red)
  - Room 114: 1.70 (red)
  - Room 115: 2.04 (red)
  - Room 116: 1.70 (red)
  - Room 117: 2.04 (red)
  - Room 118: 1.70 (red)
  - Room 119: 2.04 (red)
  - Room 120: 1.70 (red)
  - Room 121: 2.04 (red)
  - Room 122: 1.70 (red)
  - Room 123: 2.04 (red)
  - Room 124: 1.70 (red)
  - Room 125: 2.04 (red)
  - Room 126: 1.70 (red)
  - Room 127: 2.04 (red)
  - Room 128: 1.70 (red)
  - Room 129: 2.04 (red)
  - Room 130: 1.70 (red)
  - Room 131: 2.04 (red)
  - Room 132: 1.70 (red)
  - Room 133: 2.04 (red)
  - Room 134: 1.70 (red)
  - Room 135: 2.04 (red)
  - Room 136: 1.70 (red)
  - Room 137: 2.04 (red)
  - Room 138: 1.70 (red)
  - Room 139: 2.04 (red)
  - Room 140: 1.70 (red)
  - Room 141: 2.04 (red)
  - Room 142: 1.70 (red)
  - Room 143: 2.04 (red)
  - Room 144: 1.70 (red)
  - Room 145: 2.04 (red)
  - Room 146: 1.70 (red)
  - Room 147: 2.04 (red)
  - Room 148: 1.70 (red)
  - Room 149: 2.04 (red)
  - Room 150: 1.70 (red)
  - Room 151: 2.04 (red)
  - Room 152: 1.70 (red)
  - Room 153: 2.04 (red)
  - Room 154: 1.70 (red)
  - Room 155: 2.04 (red)
  - Room 156: 1.70 (red)
  - Room 157: 2.04 (red)
  - Room 158: 1.70 (red)
  - Room 159: 2.04 (red)
  - Room 160: 1.70 (red)
  - Room 161: 2.04 (red)
  - Room 162: 1.70 (red)
  - Room 163: 2.04 (red)
  - Room 164: 1.70 (red)
  - Room 165: 2.04 (red)
  - Room 166: 1.70 (red)
  - Room 167: 2.04 (red)
  - Room 168: 1.70 (red)
  - Room 169: 2.04 (red)
  - Room 170: 1.70 (red)
  - Room 171: 2.04 (red)
  - Room 172: 1.70 (red)
  - Room 173: 2.04 (red)
  - Room 174: 1.70 (red)
  - Room 175: 2.04 (red)
  - Room 176: 1.70 (red)
  - Room 177: 2.04 (red)
  - Room 178: 1.70 (red)
  - Room 179: 2.04 (red)
  - Room 180: 1.70 (red)
  - Room 181: 2.04 (red)
  - Room 182: 1.70 (red)
  - Room 183: 2.04 (red)
  - Room 184: 1.70 (red)
  - Room 185: 2.04 (red)
  - Room 186: 1.70 (red)
  - Room 187: 2.04 (red)
  - Room 188: 1.70 (red)
  - Room 189: 2.04 (red)
  - Room 190: 1.70 (red)
  - Room 191: 2.04 (red)
  - Room 192: 1.70 (red)
  - Room 193: 2.04 (red)
  - Room 194: 1.70 (red)
  - Room 195: 2.04 (red)
  - Room 196: 1.70 (red)
  - Room 197: 2.04 (red)
  - Room 198: 1.70 (red)
  - Room 199: 2.04 (red)
  - Room 200: 1.70 (red)
  - Room 201: 2.04 (red)
  - Room 202: 1.70 (red)
  - Room 203: 2.04 (red)
  - Room 204: 1.70 (red)
  - Room 205: 2.04 (red)
  - Room 206: 1.70 (red)
  - Room 207: 2.04 (red)
  - Room 208: 1.70 (red)
  - Room 209: 2.04 (red)
  - Room 210: 1.70 (red)
  - Room 211: 2.04 (red)
  - Room 212: 1.70 (red)
  - Room 213: 2.04 (red)
  - Room 214: 1.70 (red)
  - Room 215: 2.04 (red)
  -

2 145 000 ₺



+7(495)797-7074

# ПОМЕЩЕНИЕ СВОБОДНОГО НАЗНАЧЕНИЯ 302 М²



МЕТРО

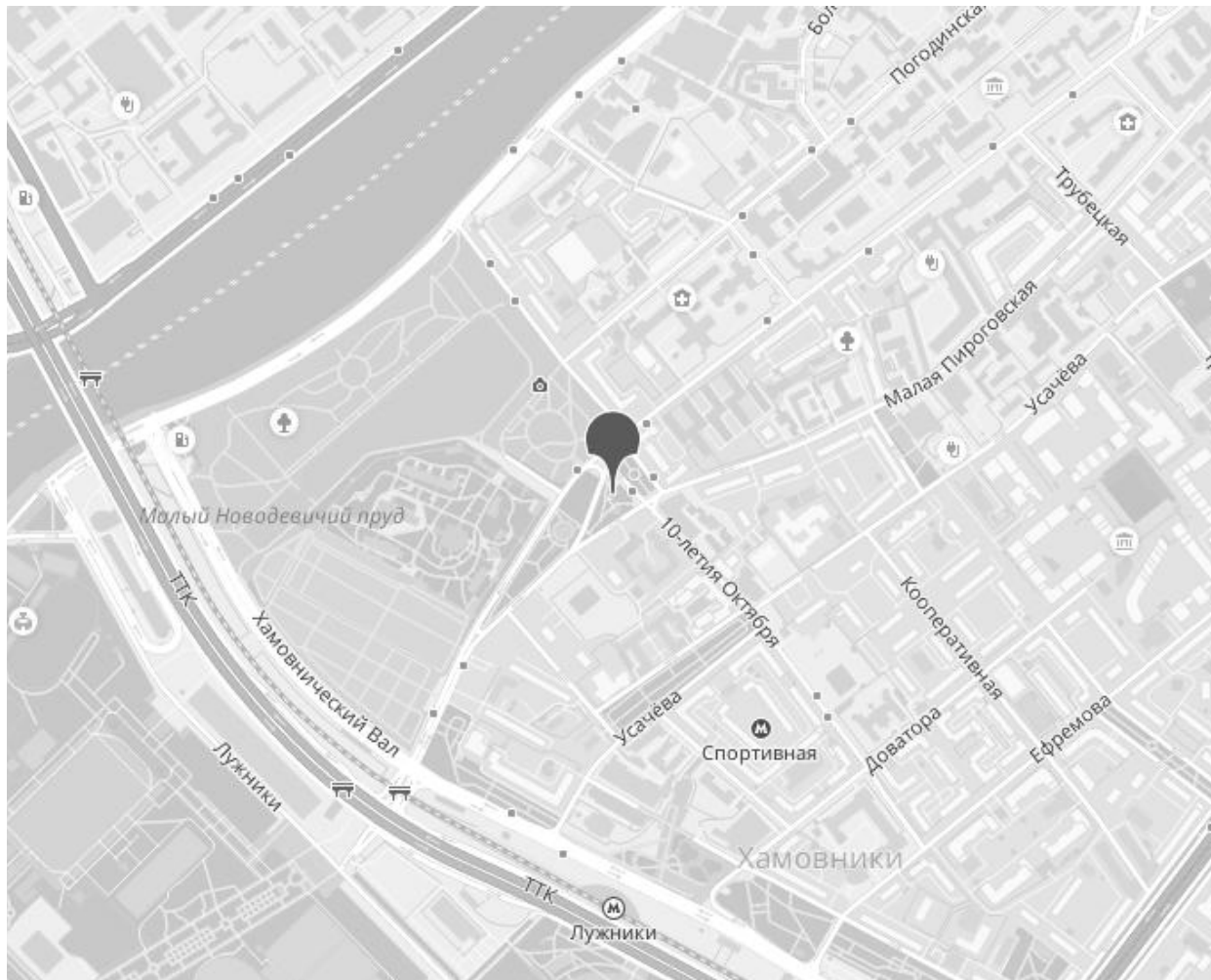
**Спортивная**

5 минут пешком



АДРЕС

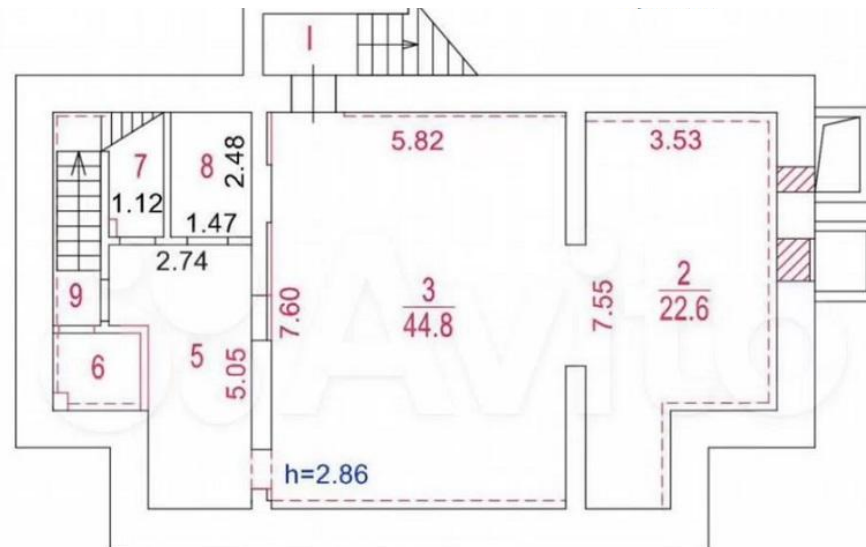
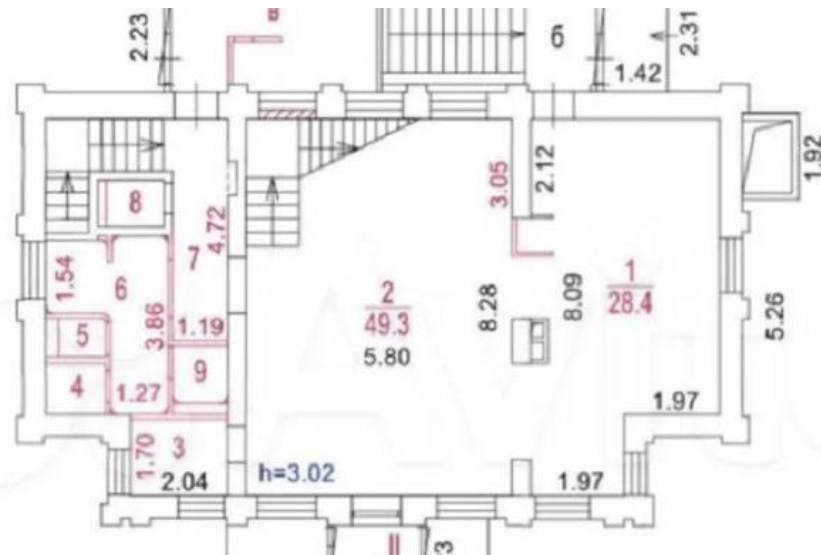
**г Москва, Лужнецкий  
проезд, д 1Б**  
ЦЕНТРАЛЬНЫЙ



## ОПИСАНИЕ

ID 62712 Предлагаю в аренду ПСН площадью 302 м2 расположенное на первой линии домов по Лужнецкому проезду. Здание 1996 года постройки, расположено напротив парка Новодевичьи пруды. Два этажа (высота потолков 1 этаж - 3.30м., 2 этаж - 4 м.) и цоколь, три отдельных входа, смешанная планировка. В здании проведен капитальный ремонт с заменой и теплоизоляцией кровли, заменой оконных проемов, ремонтом фасада. На 1 и 2 этажах выполнены инженерные работы 90% и частично отделочные работы 40%, на цокольном этаже (зона кухни) выполнены все инженерные и отделочные работы. Все коммуникации в наличии, электрическая мощность 120 кВт. Перед зданием расширенная зона тротуара, наземная парковка на 5 машин. Есть летняя веранда. 6 минут пешком от станции метро «Спортивная» и МЦК Лужники.

# ПОМЕЩЕНИЕ СВОБОДНОГО НАЗНАЧЕНИЯ 302 М<sup>2</sup>



# КОНТАКТЫ

**Хакунова Юлия**

СПЕЦИАЛИСТ ПО НЕДВИЖИМОСТИ

Департамент коммерческой недвижимости  
Агентство элитной недвижимости

ул Малая Пироговская, д 16

+7(905)754-4458

+7(495)797-7074

hakunova@chaseestate.ru

**chaseestate.ru**

